

材质：采用尼龙66制造，耐冲击，强度高。

特性：1. 适合于用在往复运动的场合，能够对内置的电缆、油管、气管、水管等起到牵引和保护的作用。  
2. 拖链的每一节都能打开，便于安装和维修。运动时噪音低、耐磨，可高速行驶。

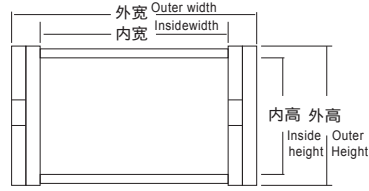
应用：拖链已被广泛应用于数控机床、电子设备、消防机械、石材机械、玻璃机械、门窗机械、注塑机、机械手、超重运输设备、自动化仓库。

Material: nylon 66, punching resistant, high strength

Features: 1. used the place of in to-and-fro, protect and conduct inside cables, oil tube, gas tube Water tube

2. every burl can be opened, convenient to instand and amend, low noise when operating, abrasion resistant, moving in high speed

Using: cable chain is used widely in index control machines electric equipment, fir control machines, stone-processing machines, glass-processing machines, door and windows processing machines, extruding machines, machine hands, super transport equipment, auto. warehouse

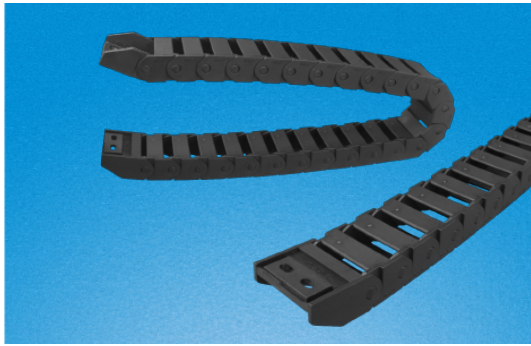


单位/Unit:mm

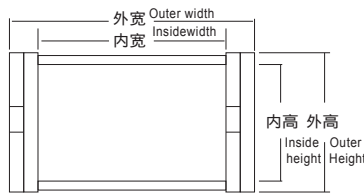
单位/Unit:mm

型号 Item No.	内高×内宽/外高×外宽 Inner height×Inner width/ Outer height×Outer width	节距/ 每米节数/ Burl instance/ burl no. per meter	弯曲 半径 Bending radius	样式 Type	型号 Item No.	内高×内宽/外高×外宽 Inner height×Inner width/ Outer height×Outer width	节距/ 每米节数/ Burl instance/ burl no. per meter	弯曲 半径 Bending radius	样式 Type
JF0707-15B	7×7/10×12.5	16.7/58	15	不可打开 Locking	JF1837-38BFN	18×37/23×47	33.5/30	38	外侧封闭
JF0707-28B	7×7/10×12.5	16.7/58	28	不可打开 Locking	JF1837-48BFN	18×37/23×47	33.5/30	48	内侧打开
JF1006-18F	10×6/13.5×13.5	20/50	28	易进型/Easy installing type	JF1850-38BFN			38	Outer sealed
JF1010-18B	10×10/15×16.5	15/66	18	不可打开 Locking	JF1850-48BFN	18×37/23×62	33.5/30	48	Opening
JF1010-28B	10×10/15×16.5	15/66	28	不可打开 Locking	JF1850-75BFN			75	inside
JF1015-28B	10×15/15×20	20/50	28	不可打开 Locking	JF2525-55S			55	
JF1015-38B	10×15/15×20	20/50	38	不可打开 Locking	JF2525-75S			75	
JF1015-18BFB	10×15/15×20	20/50	18	半封闭不可开 Half sealed Locking	JF2525-100S			100	
JF1015-28BFB	10×15/15×20	20/50	28	半封闭不可开 Half sealed Locking	JF2525-125S	25×25/35×35	46/22	125	
JF1020-18B	10×20/15.5×28.5	20/50	18	不可打开 Locking	JF2525-150S			150	
JF1020-28B	10×20/15.5×28.5	20/50	28	不可打开 Locking	JF2525-175S			175	
JF1020-28BFB	10×20/15.5×28.5	20/50	28	半封闭不可开 Half sealed Locking	JF2525-200S			200	双面打开 Opening double side
JF1020-38BFB	10×20/15.5×28.5	20/50	38	半封闭不可开 Half sealed Locking	JF2538-55S			55	
JF1520-28B	15×20/20×28.5	20/50	28	不可打开 Locking	JF2538-75S			75	
JF1520-38B	15×20/20×28.5	20/50	38	不可打开 Locking	JF2538-100S			100	
JF1530-28B	15×30/20×38.5	20/50	28	不可打开 Locking	JF2538-125S	25×38/35×51	46/22	125	
JF1515-28BFN	15×15/20×20	20/50	28		JF2538-150S			150	
JF1520-28BFN	15×20/20×28.5	20/50	28	外侧封闭	JF2538-175S			175	
JF1520-38BFN	15×20/20×28.5	20/50	38	内侧打开	JF2538-200S			200	
JF1530-28BFN	15×30/20×38.5	20/50	28	Outer sealed	JF2538-55N			55	连体内
JF1530-38BFN	15×30/20×38.5	20/50	38	Opening	JF2538-75N			75	开式
JF1540-28BFN	15×40/20×48.5	20/50	28	inside	JF2538-100N			100	Body
JF1540-38BFN	15×40/20×48.5	20/50	38	inside	JF2538-125N	25×38/35×51	46/22	125	connecting
JF1550-28BFN	15×50/20×58.5	20/50	28		JF2538-150N			150	inside
JF1550-48BFN	15×50/20×58.5	20/50	48		JF2538-175N			175	opeing type
JF1825-38B			38		JF2538-200N			200	
JF1825-48B	18×25/23×36	30.5/33	48	不可打开 Locking	JF2557-55S			55	
JF1825-75B			75		JF2557-75S			75	
JF1825-38W			38		JF2557-100S			100	
JF1825-48W	18×25/23×36	30.5/30	48	外部打开 Opening outside	JF2557-125S	25×57/35×71	46/22	125	
JF1825-75W			75		JF2557-150S			150	
JF1825-100W			100		JF2557-175S			175	
JF1837-38B			38		JF2557-200S			200	双面打开 Opening
JF1837-48B	18×37/23×47	30.5/33	48	不可打开 Locking	JF2577-55S			55	double side
JF1837-75B			75		JF2577-75S			75	
JF1818-28BFN			28		JF2577-100S			100	
JF1818-38BFN	18×18/23.5×36	33.5/30	38	外侧封闭	JF2577-125S	25×77/35×91	46/22	125	
JF1818-48BFN			48	内侧打开	JF2577-150S			150	
JF1825-28BFN			28	Outer sealed	JF2577-175S			175	
JF1825-38BFN			38	Opening	JF2577-200S			200	
JF1825-48BFN	18×25/23.5×36	33.5/30	48	inside	JF2525-75SD	25×25/36×35	46/22	75	双面打开
JF1825-75BFN			75		JF2538-75SD	25×38/36×55	46/22	75	低噪音
					JF2557-75SD	25×57/36×74	46/22	75	Opening double side
					JF2577-75SD	25×77/36×94	46/22	75	low noise

# RCCN 日成JF型尼龙拖链 Nylon Drag chain



材质：采用尼龙66制造，耐冲击，强度高。  
Material: nylon 66, punching resistant, high strength



单位/Unit:mm

单位/Unit:mm

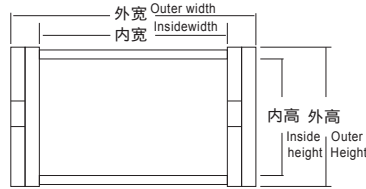
型号 Item No.	内高×内宽/外高×外宽 Inner height×Inner width/ Outer height×Outer width	节距/ 每米节数/ Burl instance/ burl no. per meter	弯曲 半径 Bending radius	样式 Type	型号 Item No.	内高×内宽/外高×外宽 Inner height×Inner width/ Outer height×Outer width	节距/ 每米节数/ Burl instance/ burl no. per meter	弯曲 半径 Bending radius	样式 Type	
JF2525-55FS	25×25/35×35	46/22	55	双面打开 Opening double side	JF2557-55NFS	25×57/35×74	46/22	55	加强型 全封闭 打开式 Reinforced whole sealed opening type	
JF2525-75FS			75		JF2557-75NFS			75		
JF2525-100FS			100		JF2557-100NFS			100		
JF2525-125FS			125		JF2557-125NFS			125		
JF2525-150FS			150		JF2577-55NFS			55		
JF2525-175FS			175		JF2577-75NFS			75		
JF2525-200FS			200		JF2577-100NFS			100		
JF2538-55FS	25×38/35×51	46/22	55	全封闭 打开式 Whole sealed opening type	JF2577-125NFS	25×77/35×91	46/22	125	加强型全 封闭打开 Reinforced whole sealed opening type	
JF2538-75FS			75		JF2577-150FS			150		
JF2538-100FS			100		JF2577-175FS			175		
JF2538-125FS			125		JF2577-200FS			200		
JF2538-150FS			150		JF3038-75NS			75		
JF2538-175FS			175		JF3038-100NS			100		
JF2538-200FS			200		JF3038-150NS			150		
JF2557-55FS	25×57/35×71	46/22	55	加强型 打开式 Reinforced opening type	JF3057-75NS	30×57/45×74	46/22	75	双面打开 Opening double side	
JF2557-75FS			75		JF3057-100NS			100		
JF2557-100FS			100		JF3057-150NS			150		
JF2557-125FS			125		JF3077-75NS			75		
JF2557-150FS			150		JF3077-100NS			100		
JF2557-175FS			175		JF3077-150NS			150		
JF2557-200FS			200		JF3038-75NFS			75		
JF2577-55FS	25×77/35×91	46/22	55	加强型 打开式 Reinforced opening type	JF3038-100NFS	30×38/45×55	46/22	100	外打开 Opening double side	
JF2577-75FS			75		JF3038-150NFS			150		
JF2577-100FS			100		JF3057-75NFS			75		
JF2577-125FS			125		JF3057-100NFS			100		
JF2577-150FS			150		JF3057-150NFS			150		
JF2577-175FS			175		JF3077-75NFS			75		
JF2577-200FS			200		JF3077-100NFS			100		
JF2538-55NS	25×38/35×55	46/22	55	加强型 打开式 Reinforced opening type	JF3077-150NFS	30×77/45×94	46/22	150	双面打开 Opening double side	
JF2538-75NS			75		JF3550-75S			75		
JF2538-100NS			100		JF3550-150S			150		
JF2538-125NS			125		JF3575-75W			75		
JF2557-55NS			55		JF3575-150W			150		
JF2557-75NS			75		JF35100-75S			75		
JF2557-100NS			100		JF35100-150S			150		
JF2557-125NS	125	JF35125-75S	75							
JF2577-55NS	25×77/35×94	46/22	55	加强型 打开式 Reinforced opening type	JF35125-150S	35×125/50×143	56/17	150	加强型 打开式 Reinforced opening type	
JF2577-75NS			75		JF3550-75NS			75		
JF2577-100NS			100		JF3550-100NS			100		
JF2577-125NS			125		JF3550-125NS			125		
JF2577-150NS			150		JF3550-150NS			150		
JF2577-175NS			175		JF3550-200NS			200		
JF2577-200NS			200		JF3550-250NS			250		
JF2538-55NFS	25×38/35×55	46/22	55	加强型 打开式 Reinforced opening type						
JF2538-75NFS			75							
JF2538-100NFS			100							
JF2538-125NFS			125							

日成 J F 型尼龙拖链 Nylon Drag chain

### RCCN 日成 JF 型尼龙拖链 Nylon Drag chain



材质：采用尼龙66制造，耐冲击，强度高。  
Material: nylon 66, punching resistant, high strength



单位/Unit:mm

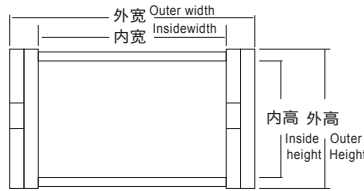
单位/Unit:mm

型号 Item No.	内高×内宽/外高×外宽 Inner height×Inner width/ Outer height×Outer width	节距/ 每米节数/ Burl instance/ burl no. per meter	弯曲 半径 Bending radius	样式 Type	型号 Item No.	内高×内宽/外高×外宽 Inner height×Inner width/ Outer height×Outer width	节距/ 每米节数/ Burl instance/ burl no. per meter	弯曲 半径 Bending radius	样式 Type	
JF3575-75NS	35×75/55×96	56/17	75	加强型 打开式 Reinforced opening type	JF3575-75NFS	35×75/55×96	56/17	75	加强型 全封闭 打开式 Reinforced whole sealed opening type	
JF3575-100NS			100		JF3575-100NFS			100		
JF3575-125NS			125		JF3575-125NFS			125		
JF3575-150NS			150		JF3575-150NFS			150		
JF3575-200NS			200		JF3575-200NFS			200		
JF3575-250NS			250		JF3575-250NFS			250		
JF35100-75NS	35×100/55×121	56/17	75		JF35100-75NFS	35×100/55×121	56/17	75		
JF35100-100NS			100		JF35100-100NFS			100		
JF35100-125NS			125		JF35100-125NFS			125		
JF35100-150NS			150		JF35100-150NFS			150		
JF35100-200NS			200		JF35100-200NFS			200		
JF35100-250NS			250		JF35100-250NFS			250		
JF35125-75NS	35×125/55×146	56/17	75		JF35125-75NFS	35×125/55×146	56/17	75		
JF35125-100NS			100		JF35125-100NFS			100		
JF35125-125NS			125		JF35125-125NFS			125		
JF35125-150NS			150		JF35125-150NFS			150		
JF35125-200NS			200		JF35125-200NFS			200		
JF35125-250NS			250		JF35125-250NFS			250		
JF35150-75NS	35×150/55×171	56/17	75		JF4550-100S	45×50/64×75	67/15	100		双面打开 Opening double side
JF35150-100NS			100		JF4550-125S			125		
JF35150-125NS			125		JF4550-150S			150		
JF35150-150NS			150		JF4550-175S			175		
JF35150-200NS			200		JF4550-200S			200		
JF35150-250NS			250		JF4550-250S			250		
JF35175-75NS	35×175/55×195	56/17	75	JF4550-300S	45×75/64×100	67/15	300			
JF35175-100NS			100	JF4575-100S			100			
JF35175-125NS			125	JF4575-125S			125			
JF35175-150NS			150	JF4575-150S			150			
JF35175-200NS			200	JF4575-175S			175			
JF35175-250NS			250	JF4575-200S			200			
JF35200-75NS	35×200/55×221	56/17	75	JF4575-250S	45×100/64×125	67/15	250			
JF35200-100NS			100	JF4575-300S			300			
JF35200-125NS			125	JF45100-100S			100			
JF35200-150NS			150	JF45100-125S			125			
JF35200-200NS			200	JF45100-150S			150			
JF35200-250NS			250	JF45100-175S			175			
JF3550-75NFS	35×50/50×68	56/17	75	JF45100-200S	45×125/64×150	67/15	200			
JF3550-100NFS			100	JF45100-250S			250			
JF3550-125NFS			125	JF45100-300S			300			
JF3550-150NFS			150	JF45125-100S			100			
JF3550-200NFS			200	JF45125-125S			125			
JF3550-250NFS			250	JF45125-150S			150			
				JF45125-175S	175					
				JF45125-200S	200					
				JF45125-250S	250					

# RCCN 日成JF型尼龙拖链 Nylon Drag chain



材质：采用尼龙66制造，耐冲击，强度高。  
Material: nylon 66, punching resistant, high strength



单位/Unit:mm

单位/Unit:mm

型号 Item No.	内高×内宽/外高×外宽 Inner height×Inner width/ Outer height×Outer width	节距/ 每米节数/ Burl instance/ burl no. per meter	弯曲 半径 Bending radius	样式 Type	型号 Item No.	内高×内宽/外高×外宽 Inner height×Inner width/ Outer height×Outer width	节距/ 每米节数/ Burl instance/ burl no. per meter	弯曲 半径 Bending radius	样式 Type	
JF45150-100S	45×150/64×175	67/1	100	双面打开 Opening double side	JF45150-100NFS	45×150/64×175	67/15	100	加强型 全封闭 打开式 Reinforced whole sealed opening type	
JF45150-125S			125		JF45150-125NFS			125		
JF45150-150S			150		JF45150-150NFS			150		
JF45150-175S			175		JF45150-175NFS			175		
JF45150-200S			200		JF45150-200NFS			200		
JF45150-250S			250		JF45150-250NFS			250		
JF45150-300S			300		JF45150-300NFS			300		
JF45175-100S	45×175/64×200	67/15	100		JF45175-100NFS	45×175/64×200	67/15	100		Reinforced whole sealed opening type
JF45175-125S			125		JF45175-125NFS			125		
JF45175-150S			150		JF45175-150NFS			150		
JF45175-175S			175		JF45175-175NFS			175		
JF45175-200S			200		JF45175-200NFS			200		
JF45175-250S			250		JF45175-250NFS			250		
JF45175-300S			300		JF45175-300NFS			300		
JF45200-100S	45×200/64×225	67/15	100		JF6075-135S	60×75/88×111	91/11	135		双面打开 Opening double side
JF45200-125S			125		JF6075-150S			150		
JF45200-150S			150		JF6075-175S			175		
JF45200-175S			175	JF6075-200S	200					
JF45200-200S			200	JF6075-250S	250					
JF45200-250S			250	JF6075-300S	300					
JF45200-300S			300	JF60100-135S	135					
JF4575-100NFS	45×75/64×100	67/15	100	JF60100-150S	60×100/88×136	91/11	150			
JF4575-125NFS			125	JF60100-175S			175			
JF4575-150NFS			150	JF60100-200S			200			
JF4575-175NFS			175	JF60100-250S			250			
JF4575-200NFS			200	JF60100-300S			300			
JF4575-250NFS			250	JF60150-135S			135			
JF4575-300NFS			300	JF60150-150S			150			
JF45100-100NFS	45×100/64×125	67/15	100	JF60150-175S	60×150/88×186	91/11	175			
JF45100-125NFS			125	JF60150-200S			200			
JF45100-150NFS			150	JF60150-250S			250			
JF45100-175NFS			175	JF60150-300S			300			
JF45100-200NFS			200	JF60200-135S			135			
JF45100-250NFS			250	JF60200-150S			150			
JF45100-300NFS			300	JF60200-175S			175			
JF45125-100NFS	45×125/64×150	67/15	100	JF60200-200S	60×200/88×236	91/11	200			
JF45125-125NFS			125	JF60200-250S			250			
JF45125-150NFS			150	JF60200-300S			300			
JF45125-175NFS			175	JF60300-135S			135			
JF45125-200NFS			200	JF60300-150S			150			
JF45125-250NFS			250	JF60300-175S			175			
JF45125-300NFS			300	JF60300-200S			200			
				JF60300-250S	60×300/88×336	91/11	250			
				JF60300-300S			300			
				JF60300-300S			300			